

Component Placing, Electrical

Applicable for Z770i

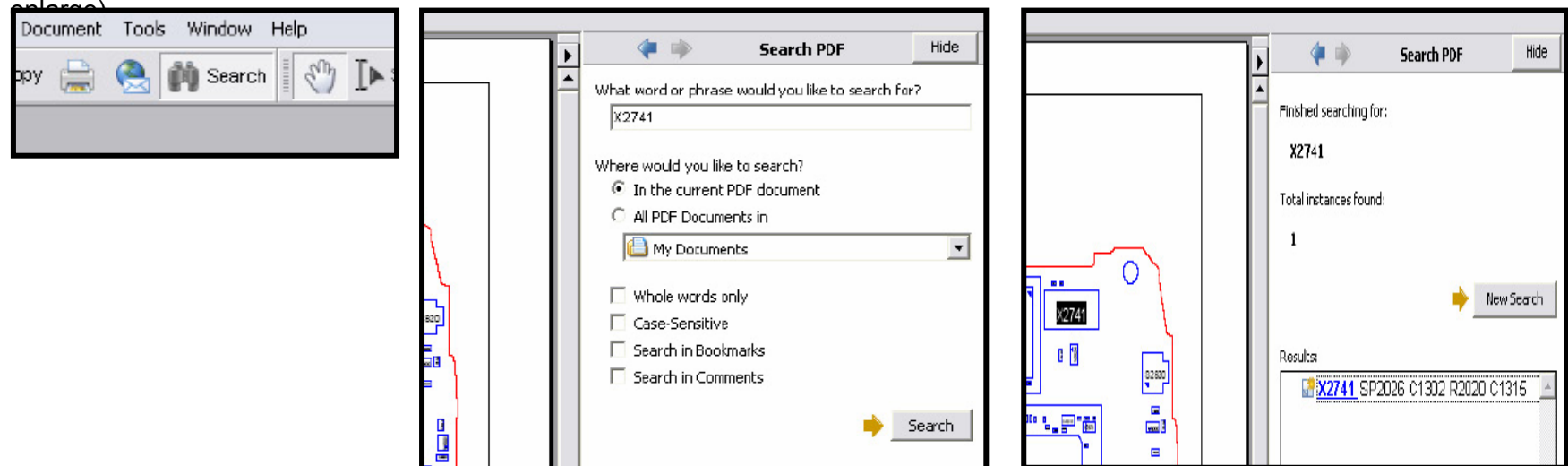
Contents

1	Mounting drawing table	2
2	Mounting drawing.....	3
3	Revision history.....	6

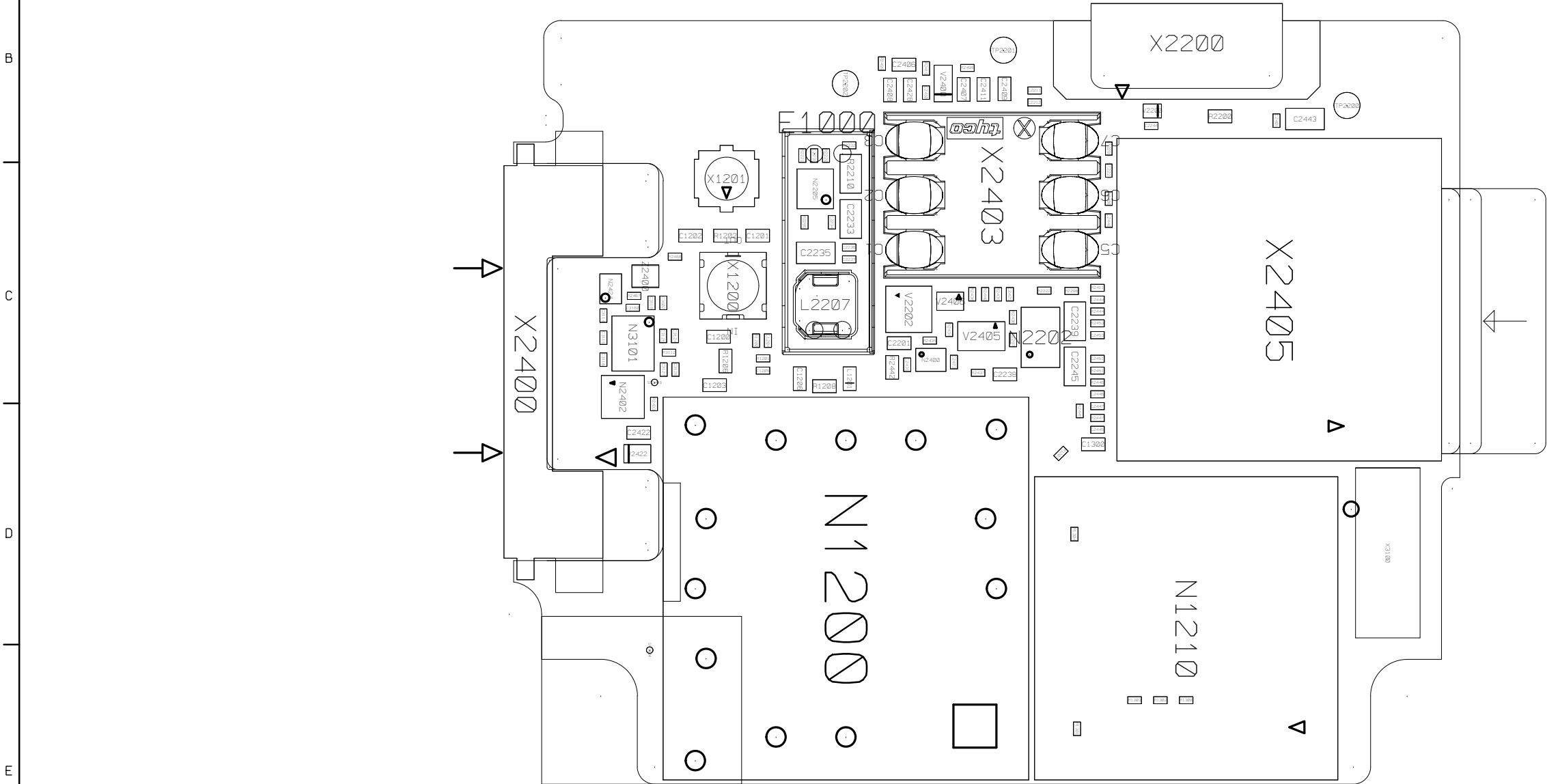
1 Mounting drawing table

Board Number	Drawing	Comments

By using the “Search” function and enter the component name you can find the position of the component
(Use Adobe Reader 7.0 or a later version). Example: You can see the component name highlighted on the circuit board (use zoom to enlarge)



2 Mounting drawing 1200-9999

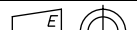


CONFIDENTIAL 1208-4638

Sony Ericsson		Prepared (Also Subject Responsible if Other)	
Drawing Rules ISO		Doc Responsible/Approved	
Tolerance		Date	
Reference		Product Name	
Scale		Document No.	
Units mm		Sheet	
Size A3		Rev	
ROA:1200-9999		4 (6)	

CONFIDENTIAL

1208-4638

Sony Ericsson			Prepared (Also Subject Responsible If Other)	
Drawing Rules ISO			Doc Responsible/Approved	Date
Tolerance			Rev	
			Product Name	
			Printed Circuit Board	
Reference			Document No.	Sheet
Scale	Units mm	Size A3	ROA:1200-9999	5 (6)

3. Revision history

Rev	Date	Changes / Comments
1	2008-03-13	First release